



WIDENING ACCESS IN THE NORTH EAST OF SCOTLAND

DR RUTH WILSON

ROBERT GORDON UNIVERSITY

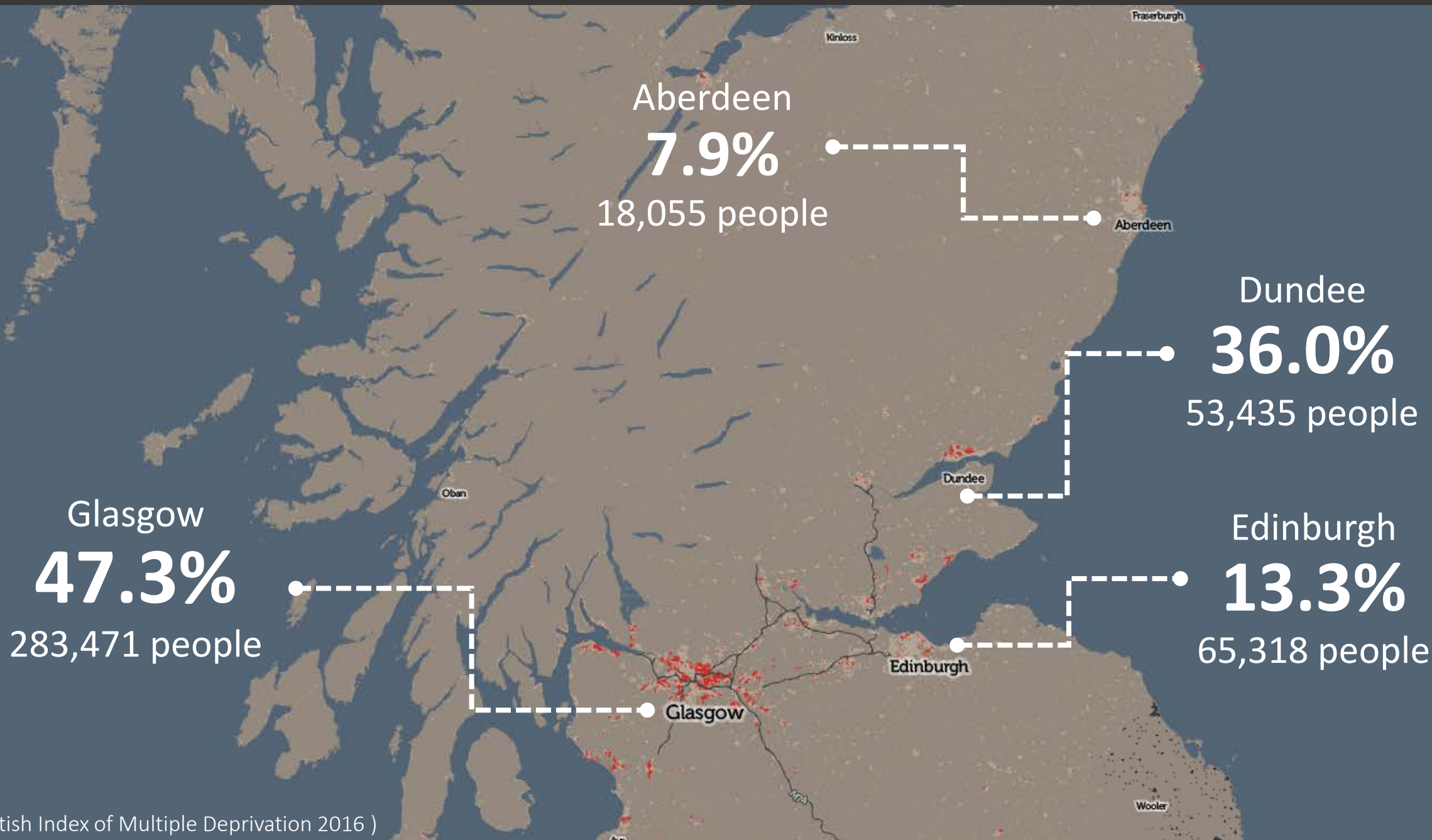


**ROBERT GORDON
UNIVERSITY ABERDEEN**

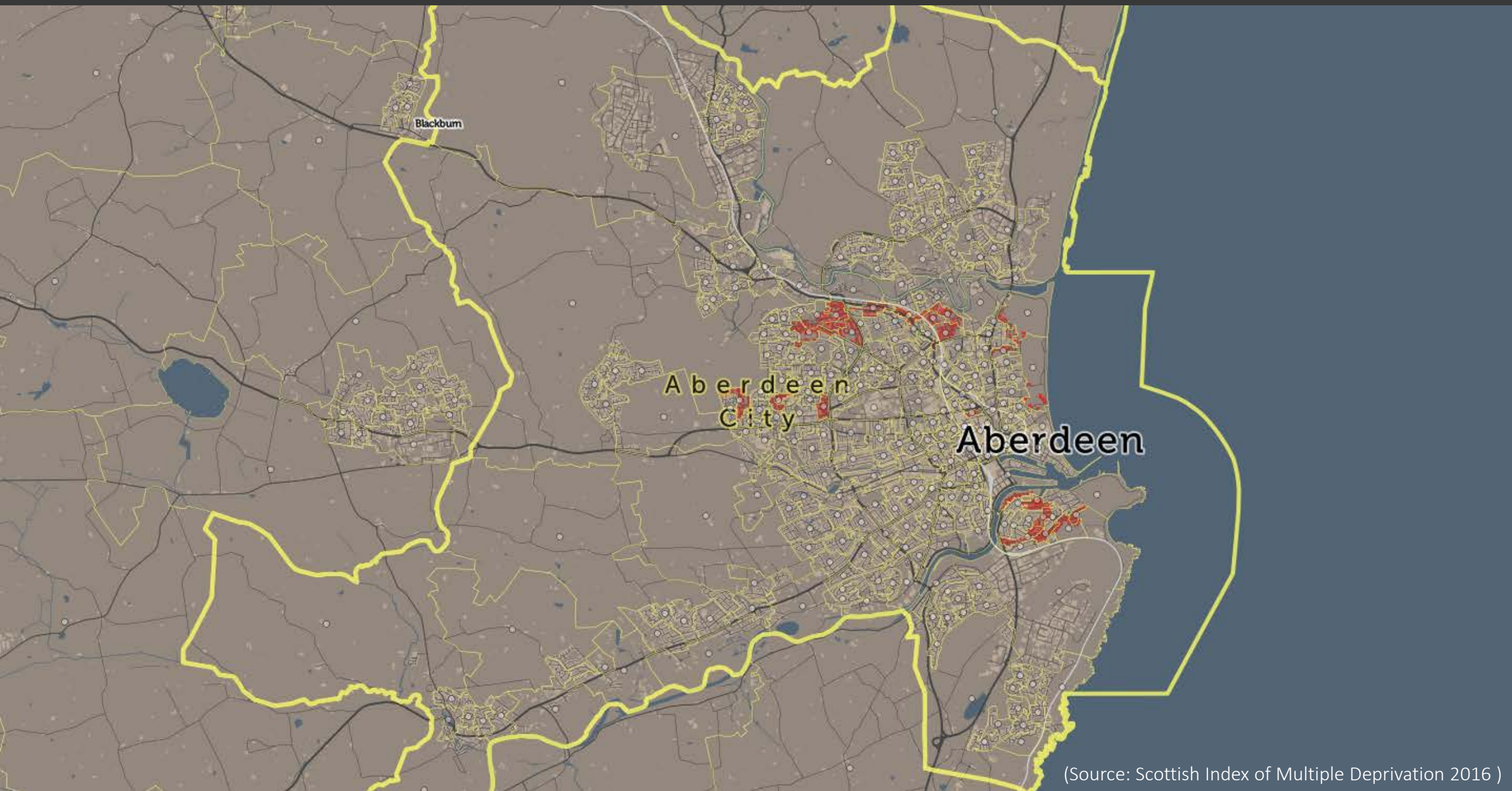
DELTA DEPARTMENT FOR THE ENHANCEMENT OF
LEARNING, TEACHING AND ACCESS

A CLEAR FUTURE

Extending access to learning: enable individuals to achieve their ambitions throughout life whatever their circumstances

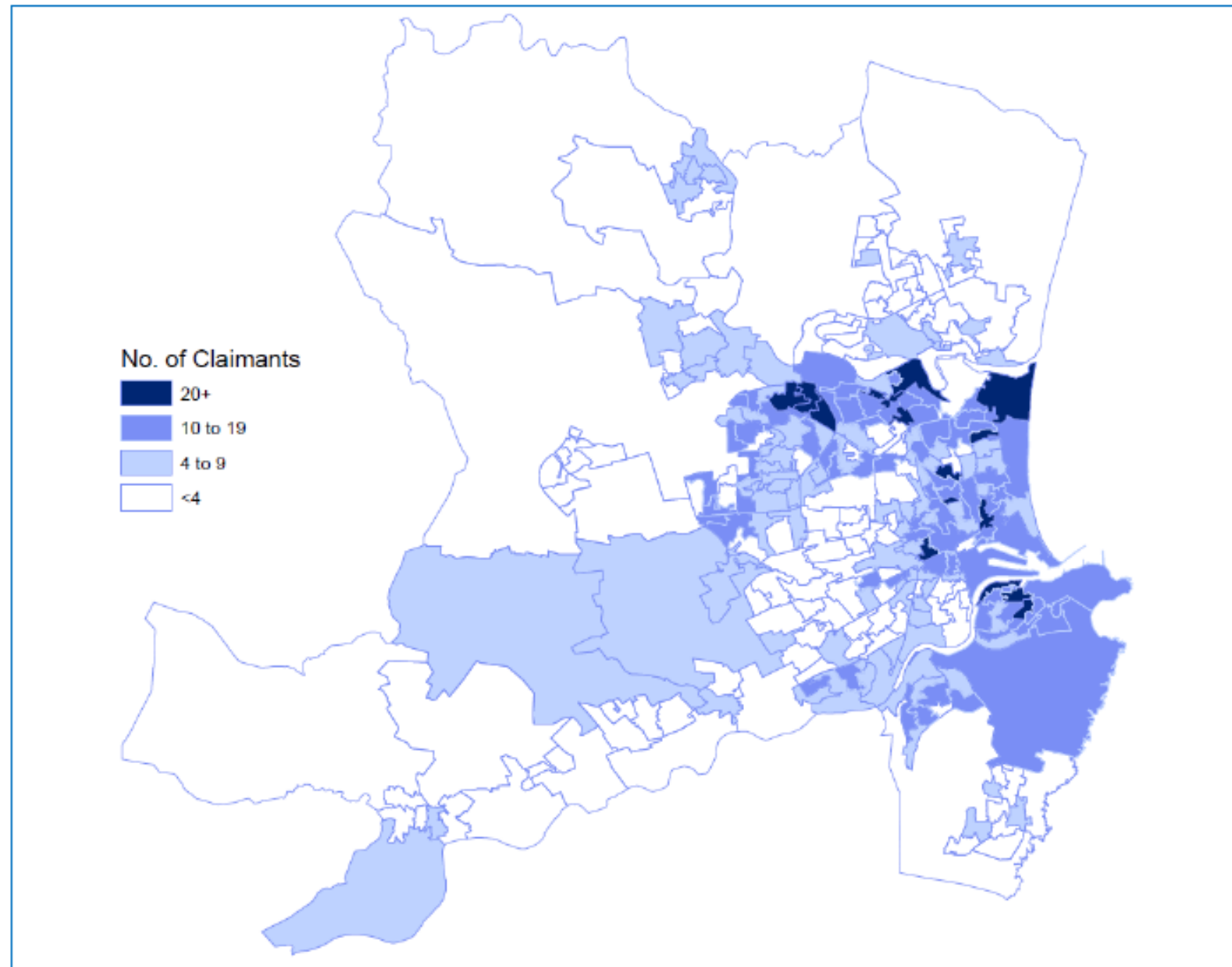


(Source: Scottish Index of Multiple Deprivation 2016)



(Source: Scottish Index of Multiple Deprivation 2016)

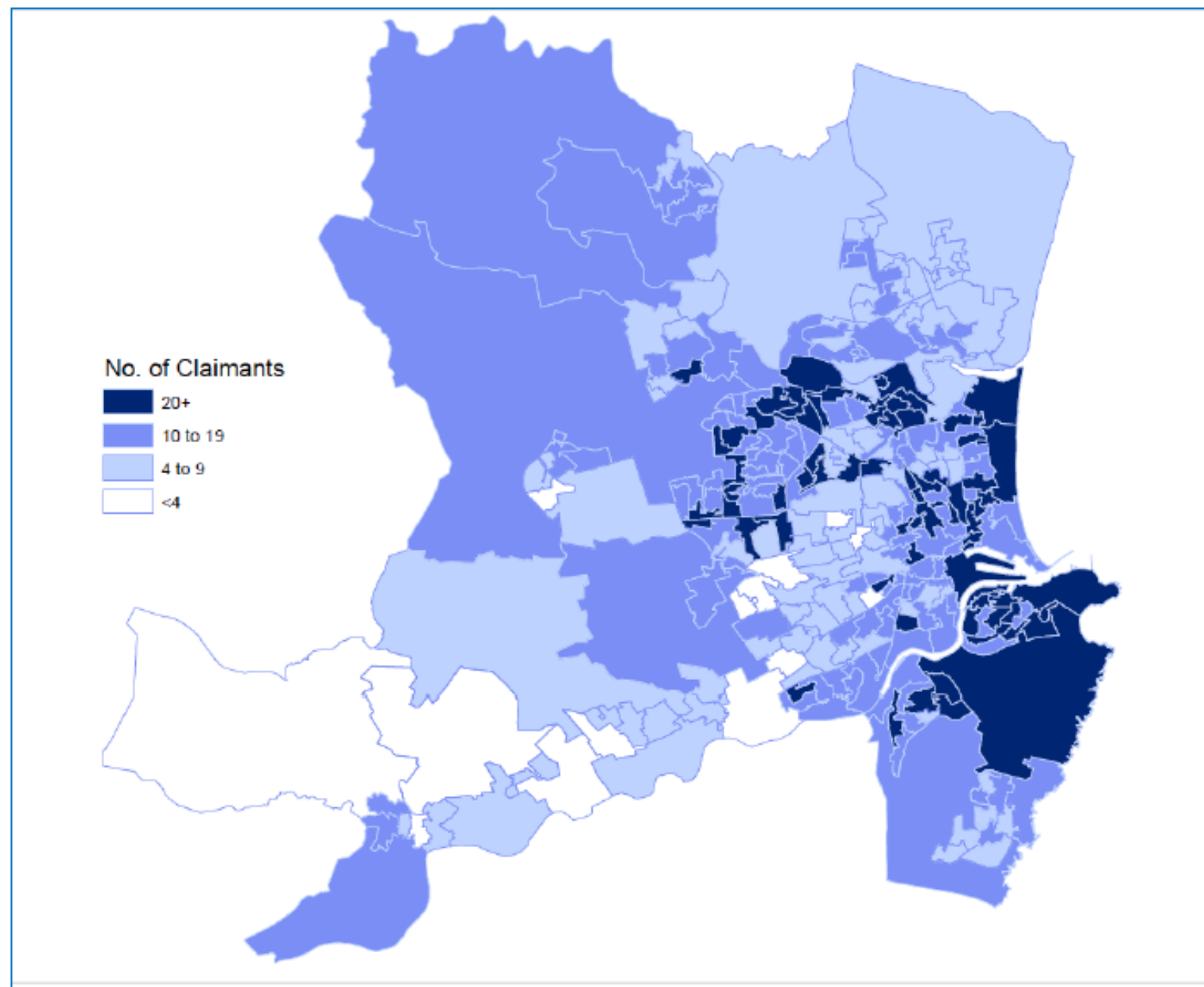
Map 1: Claimant count by data zone, Aberdeen City, December 2014



Source: Nomis, Claimant Count, Available at:

<https://www.nomisweb.co.uk/query/select/getdatasetbytheme.asp?opt=3&theme=&subgrp>

Map 2: Claimant count by data zone, Aberdeen City, August 2016



Source: Nomis, Claimant Count, Available at:

<https://www.nomisweb.co.uk/query/select/getdatasetbytheme.asp?opt=3&theme=&subgrp>

FOOD PARCELS DISTRIBUTED IN ABERDEEN



(Source: Community Foods Initiative North East Report 2016)

LEVELS OF CHILD POVERTY IN ABERDEEN CITY



22%

NATIONAL AVERAGE



5.9%

AREA A

18.2%

ABERDEEN CITY
AVERAGE

29.4%

AREA B

(Source: End Child Poverty, Poverty in Your Area 2016)

FREE SCHOOL MEALS UPTAKE IN THE REGION



14.1%

NATIONAL AVERAGE



2.8%

AREA A

9.0%

ABERDEEN CITY
AVERAGE

28.1%

AREA B

RATE OF UNEMPLOYED SCHOOL LEAVERS SEEKING WORK



5.8%

NATIONAL AVERAGE



7.6%

ABERDEEN
CITY

(Source: Scottish Government – Summary statistics for leaver destinations 2015/16, published June 2017)

A photograph of four students in a classroom setting. A young man with glasses and a green jacket is looking towards a young woman with a fur-lined hood who is smiling. Two other students are partially visible in the foreground, one with long brown hair and another with long blonde hair. The background shows classroom blinds.

THE CHALLENGE

Build ambition
Enable access
Support achievement

A modern, curved building with a glass and metal facade, featuring a prominent circular glass section at the top. The building is set against a clear blue sky. In the foreground, there is a paved plaza with a bench and a lamppost.

OUR OFFER

Working in partnership
Targeted, sustained engagement
Learner journey approach

WORKING IN PARTNERSHIP

|| Whole Institution Approach

|| Regional Partners

- Building relationships with stakeholders and collaborators
- Developing an understanding of the regional context, educational partner and learner needs

|| Partner Schools

- Building relationships
- Developing an understanding of their learning environment
- Becoming a key part of life within the school and by extension on campus

| SCHOOLS OUTREACH

SCHOOL

COLLEGE

UNIVERSITY

WORK

- Engagement programme from S1-S6
- Identifying and maximising potential
- Building knowledge of pathways and routes
- Engaging young people, families and teachers

| COMING FROM COLLEGE

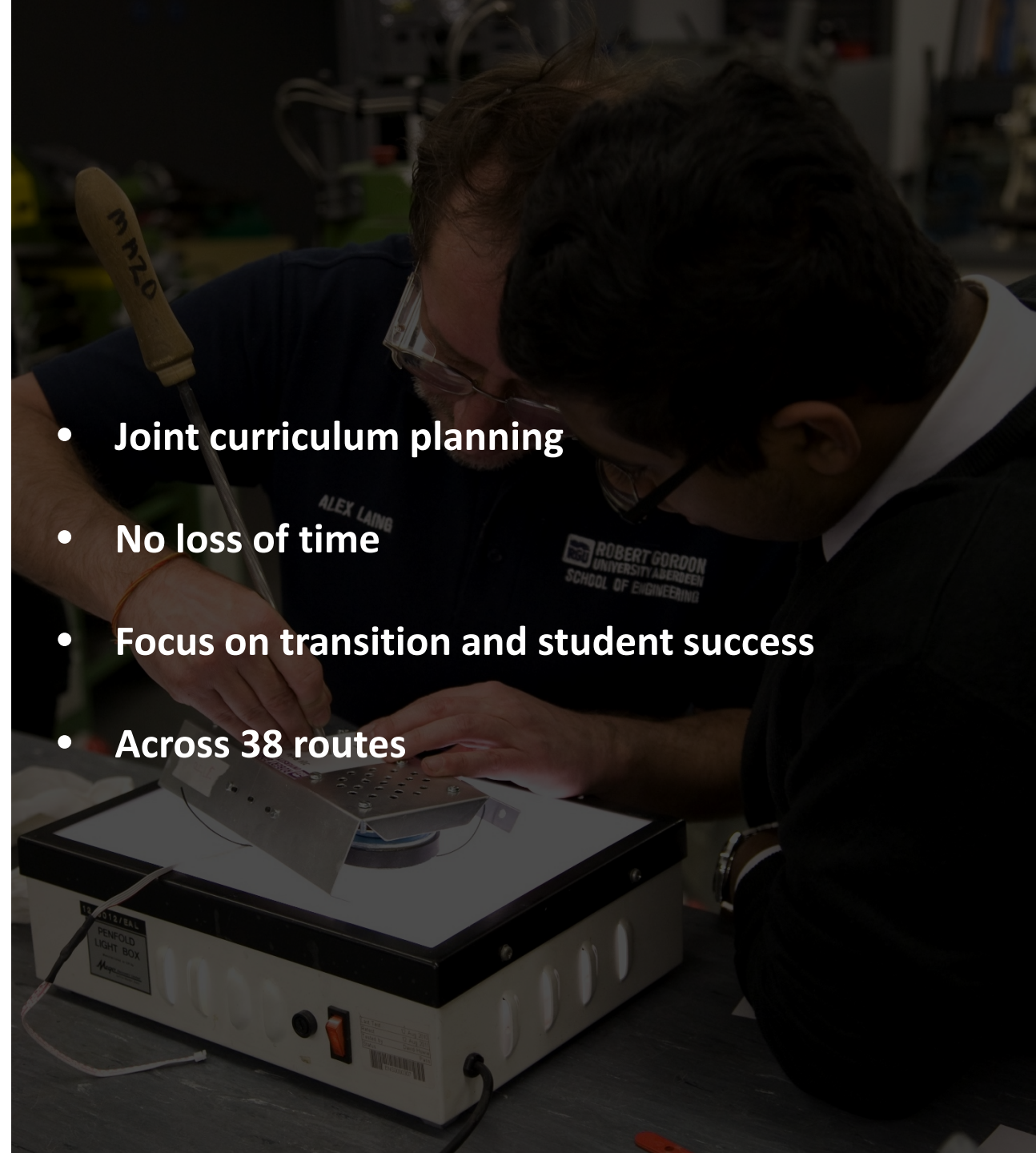
SCHOOL

COLLEGE

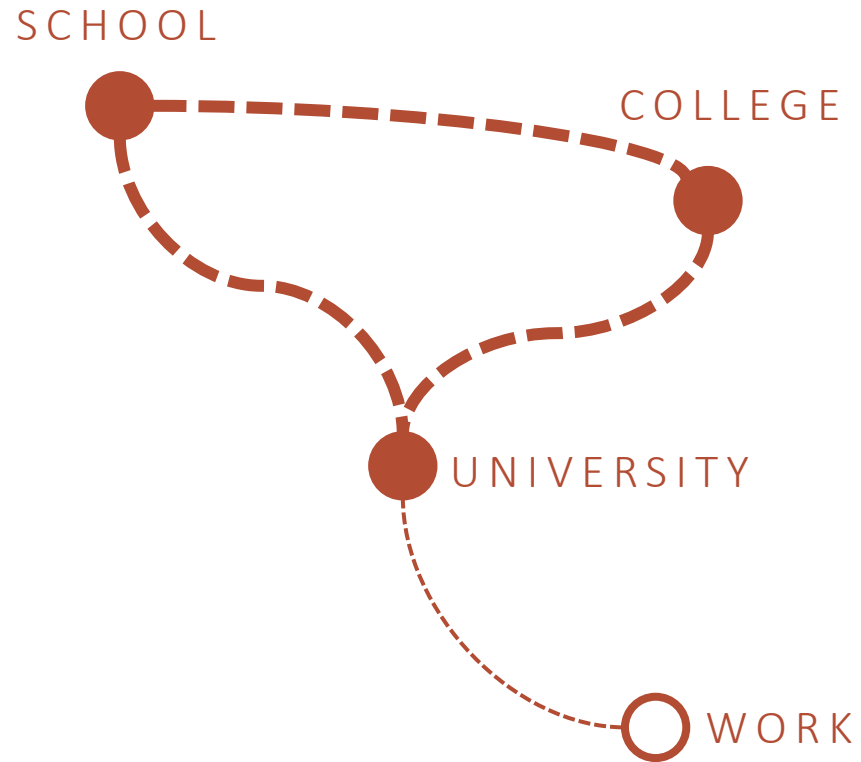
UNIVERSITY

WORK

- **Joint curriculum planning**
- **No loss of time**
- **Focus on transition and student success**
- **Across 38 routes**



| APPLICANT ENGAGEMENT



- **Support for applicants**
 - **Contextualised Admissions**
 - **Applicant Engagement**
 - **Travel Support**
- **Enrolment support**
 - **Scholarships**
 - **Enrolment Support Pack**
 - **Accommodation Discount**
 - **Advice & Guidance**

| IMPACT OF SCHOOL ENGAGEMENT



9

Programmes



209

Pupils



106

RGU
Applications



53

RGU
Enrolments

| IMPACT OF THE HUB



Number of
Articulating
Students

292

2011 - 12

493

2016 - 17



A photograph of four students in a radio studio. Three girls and one boy are seated at a long table, each wearing large headphones and holding a microphone. They are all focused on their work, with some looking at equipment on the table. The background is a simple studio wall with windows.

Highly effective partnership with North East Scotland College and local schools

Extended opportunities to study

Well developed transition and support arrangements

Understanding the regional evidence

Nationally recognised as a leader in fair access and articulation

REFLECTIONS



WIDENING ACCESS IN THE NORTH EAST OF SCOTLAND

DR RUTH WILSON

ROBERT GORDON UNIVERSITY



**ROBERT GORDON
UNIVERSITY ABERDEEN**

DELTA DEPARTMENT FOR THE ENHANCEMENT OF
LEARNING, TEACHING AND ACCESS